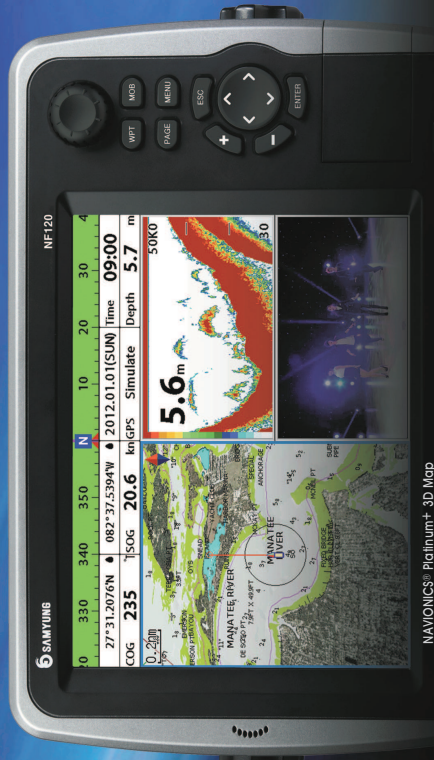


8"/10.4"/12.1" GPS 3D Color Chartplotter & Combo



N80/NF80/N100/NF100/N120/NF120

NEW

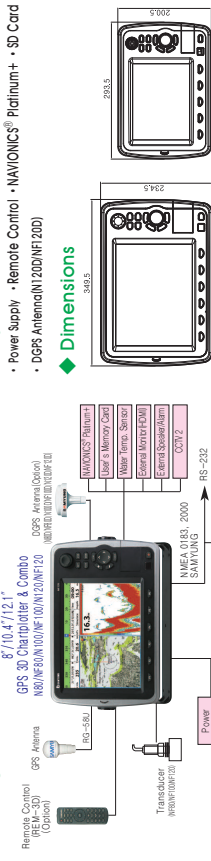


- ▶ Equipped with High Definition 3D Map
- ▶ Able to play FULL HD video clips
- ▶ The best map loading time with high performance CPU
- ▶ Perfect multi player with external equipment

SAMYUNG ENC Co., Ltd.

Spec.	Model	N80/N100/N120	NF80/NF100/NF120
Display	8"/10.4" (800 x 600 pixels) / 12.1" (1024 x 768 pixels) LED Backlight		
Receiving channel & Tracking satellite	50 Channels 16 Satellites / Digital 16 Channels multi-tracking type		
Supply voltage	11 to 35 V DC Approx. 40W		
Operating temp.	-10°C ~ 50°C		
Display mode	normal, true-motion, course-up, northup, head-up function		
Alarms	Arrival radius, anchor, XTE, danger, too shallow, too deep, fish, temperature, temperature rate, low battery, low fuel(optional), loss of DGPS fix, radar guard zone, dangerous AIS vessels.		
Chart/User card	SAMYUNG 2D/3D, NAVIONICS® Platinum+ / SD Card 2 slot, USB 1 slot		
Waypoints	30,000 waypoints (Event Mark : 48, Mark Color : 16)		
Routes	100 Routes, with up to 100 points each		
Tracks	By time or distance, 10 tracks of 30,000 points		
Chart datums	216 Chart datums(1/2000~1/87,500,000)		
Chart scale	0.2 ~ 500 nm		
Interface	NMEA 0183, NMEA 2000		
Frequency	50/200kHz		
Output	600W/1KW		
Depth Range	3m~1,500m		
Color Display	16 colors		
Brightness	10-step		
Screen Moving Speed	super fast, fast, medium, low, stop		
Battery Voltage Display	Voltage number display		
AUTO GAIN Adjustment	OFF/ON		
A-Mode Display	OFF/ON		
Demo Display	OFF/ON		
Weak Color Removal	0% ~ 75%		

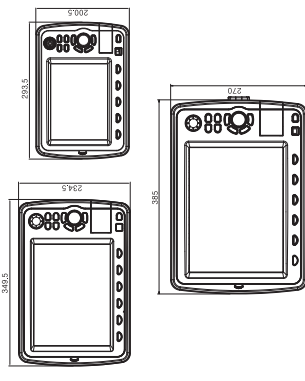
◆ Configuration



◆ Option

- Power Supply - Remote Control
- NAVIONICS® Platinum+ - SD Card
- DGPS Antenna(N120/NF120)

◆ Dimensions



◆ Component

- GPS 3D Chartplotter & Combo 1Unit
- GPS Antenna(N80/NF80/N100/NF100/N120/NF120) 1Unit
- Transducer(NF80/NF100/NF120) 1Unit
- Installation materials, Spare parts, Manual 1Set

* Specification is subject to change without notice



SAMYUNG ENC Co., Ltd.

1123-17, Dongsam-dong, Yeungdo-gu, Busan, Korea, 606-083
 Tel : 82-51-601-5532(Rep.) Fax : 82-51-413-4446
 : 65-20, 2-Ga Namhang-dong, Yeungdo-gu, Busan, Korea, 606-032
 Tel : 82-51-601-5570-4(Rep.) Fax : 82-51-416-5515
 Http : //www.samyungenc.com



ISO 9001:2000 / KS A 9001:2001
 Certificate No. : RQM0845





★ **High speed CPU!!**
★ **Smooth 3D map!!**



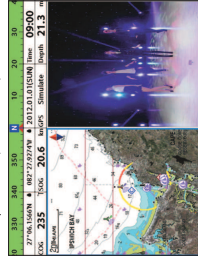
NF100

◆ **Features**

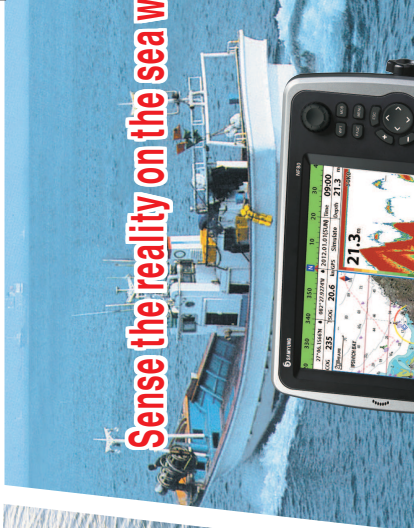
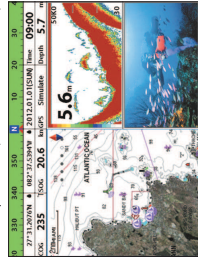
- 3D map developed with SAMYUNG ENC s / NAVIONICS® proprietary technology
- High intensity and high definition display with high resolution **TF LED** Applied
- **LED** backlighting adjustable to 10 different brightness levels
- NAVIONICS® Platinum+ available utilizing SD card input
- Plays movies, videos and music from SD or USB input
- 512/1024MB internal memory and embedded with standard SAMYUNG S-MAP
- Individual navigation GOTO & MOB buttons
- NMEA(0183/2000) interface (AIS, NAVTEX, DSC, Data repeater, Fuel control etc.)
- Multiple language support (English, Chinese, Russian, etc.)
- DGPS (including WAAS, MSAS, EGNOS) provide greatest accuracy possible
- Excellent user friendly menu and icons
- Perfect navigational interface with Auto Pilot / Engine Controls
- Utilizes dual frequency system (50/200 KHz) for detection of small fish groups (NF80/NF100/NF120)
- Features upgraded auto range, gain output and pulse length in
- our latest fish finding circuitry (NF80/NF100/NF120)
- Utilizes high performance transducer for detection of individual and small fish (NF80/NF100/NF120)



• Two split screen (Chart / Video)



• Three split screen (Chart / Fishfinder / Video)



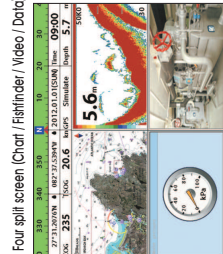
Sense the reality on the sea with New 3D technology !!



NF80



- SAMYUNG 2D/3D MAP can be displayed on high resolution **LED**
- NAVIONICS® Platinum+ 2D/3D MAP can be displayed on the high resolution **LED** (SD Card)
- Display multiple functions on split screen



• Four split screen (Chart / Fishfinder / Video / Data)

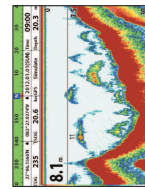


3D technology !!



N120

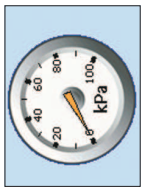
- High sensitivity GPS/DGPS Antenna can be used
- Adopted digital 50 channels multitracer technique
- AIS information can be displayed on the plotter when connected to the compatible AIS receiver (NMEA0183)



- **L1** Represent the fish group in fish shape
- Dual frequency (50/200KHz) Transducer (Water temperature, speed sensor)
- Fishfinder screen setting available in Auto/Manual mode and Pause/Playback mode



- Choose a page / function by using icon for menu
- Various icons



- NMEA 2000 interface
- Data repeater, fuel control etc.



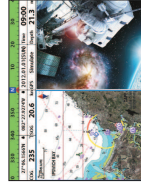
- Possible to input the external video
-CCV (Composite) = 2Channel
-S-Video (NTSC/PAL) = 1Channel
- Multi display available with HDMI method



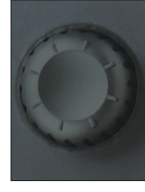
★ **Sophisticated Design!!**
★ **Perfect multiplayer!!**



N100



- Movies, music, video clips can be played using SD CARD or USB drive



- User friendly with rational Encoder key applied which enables to maximize, minimize and change direction



- Applied SD/USB Media Card Port enables the user to use various function (SD=2SLOT, USB=1SLOT)



- External Alarm and External speaker can be connected

